

# Bastion

A single skin partitioning system ideal for cost effective enclosures of superior strength and durability



LEE  
MODULAR STEEL WALLS

# Bastion is a partitioning system with exceptional strength and durability, which forms a highly secure perimeter.

## Panel Sections -

Available in: full steel, steel/mesh/steel, steel/mesh, full mesh, steel/glass/steel and steel/glass

(Mesh includes expanded sheet)

## Dimensions (mm) -

There are four standard heights available:  
2440, 2745, 3000 and 3660.

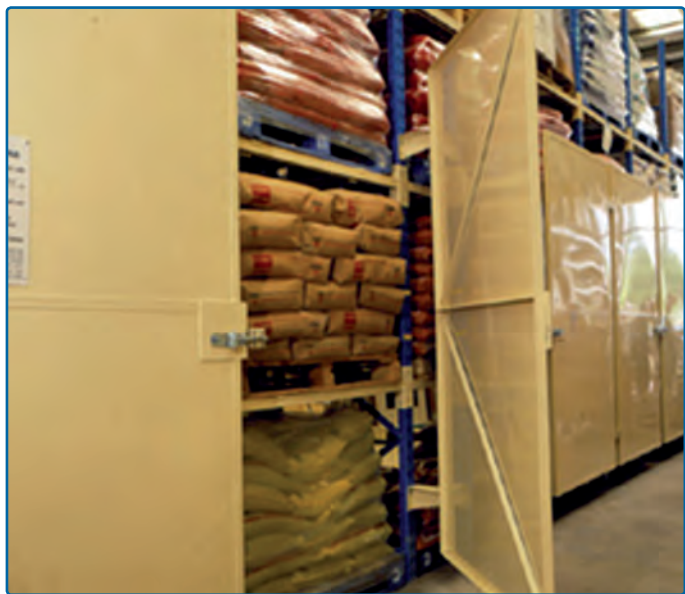
Panels are available in widths of:  
300, 400, 500, 600, 700, 800, 900, 1000 and 1200.

## Finish -

All panels are supplied with a TGIC and lead free powder coat, to an average thickness of 70 microns. Partitioning is available in Sandstone BS.08.B.17, Grey BS.0.A.05, Grey RAL7037, White RAL9010 or Blue RAL5010.

However, non-standard and corporate colours are available upon request.





Bastion is an economic heavy duty single skin partition system with superb strength and adaptability. Its robust angle frame makes it the ideal choice for creating a highly secure perimeter around any area.

In typical applications, Bastion prevents enclosed areas from intrusion, keeping the contents safe.

Bastion panels can be multi-tiered to create a truly demountable system that is ideal for any dynamic workspace.

A 40 x 40 x 2.5mm steel angle framework makes for an exceptionally strong single skin partition system.



Lock & handle units are integrated; however there is a selection of locking systems available.



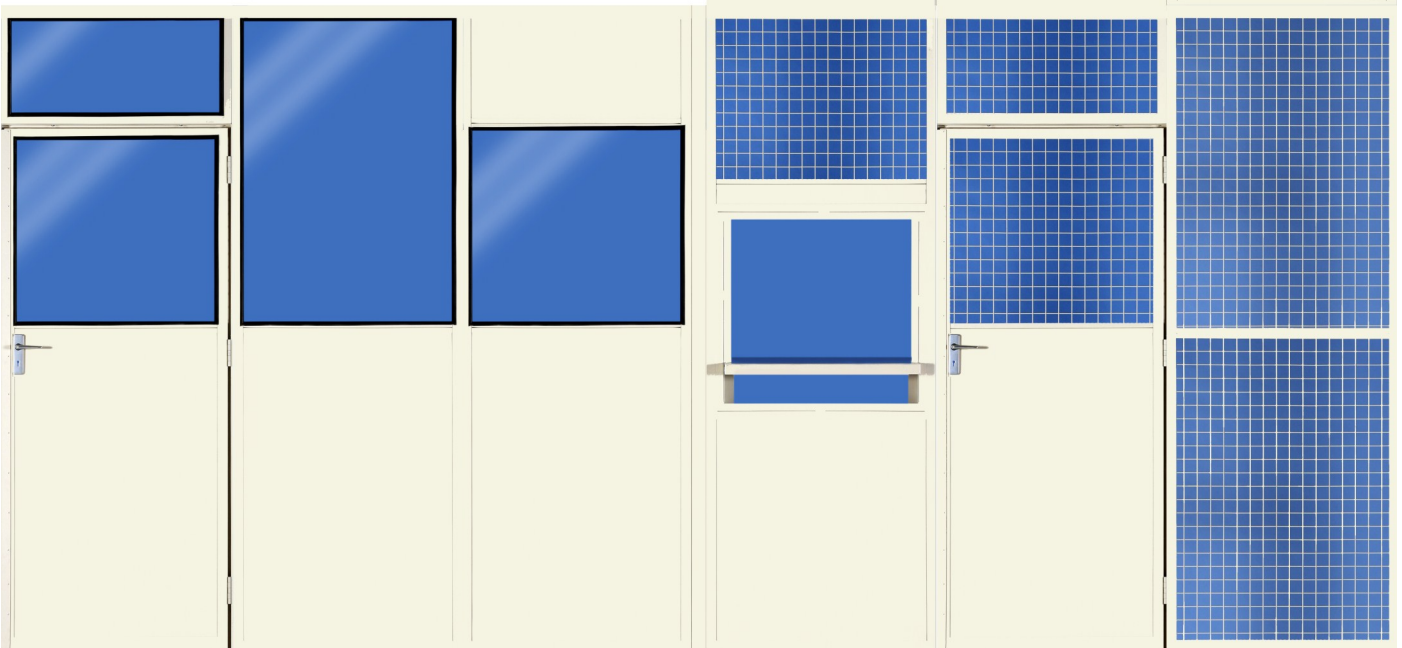
Use of expanded steel sheet gives exceptional strength and security.



# BASTION

## Panel Options

1. Full Steel
2. Steel / Mesh / Steel
3. Steel / Mesh
4. Full Mesh
5. Steel / Mesh door
6. Drop Down Hatch
7. Steel / glass / Steel
8. Steel / Glass
9. Steel / Glass door



**Troax Lee Manufacturing** Bldg. 52, Third Avenue, Pensnett Trading Estate, Kingswinford, Dudley, DY6 7XF

Telephone: +44 (0) 1384 277 441 Fax +44 (0) 1384 273 627 email: [info@troax.co.uk](mailto:info@troax.co.uk) [www.leewalls.co.uk](http://www.leewalls.co.uk)