



GIVING SECURITY & ADDED VALUE TO STORAGE APPLICATIONS

MATERIAL HANDLING & LOGISTICS SOLUTIONS



SKILL, QUALITY AND EXPERIENCE

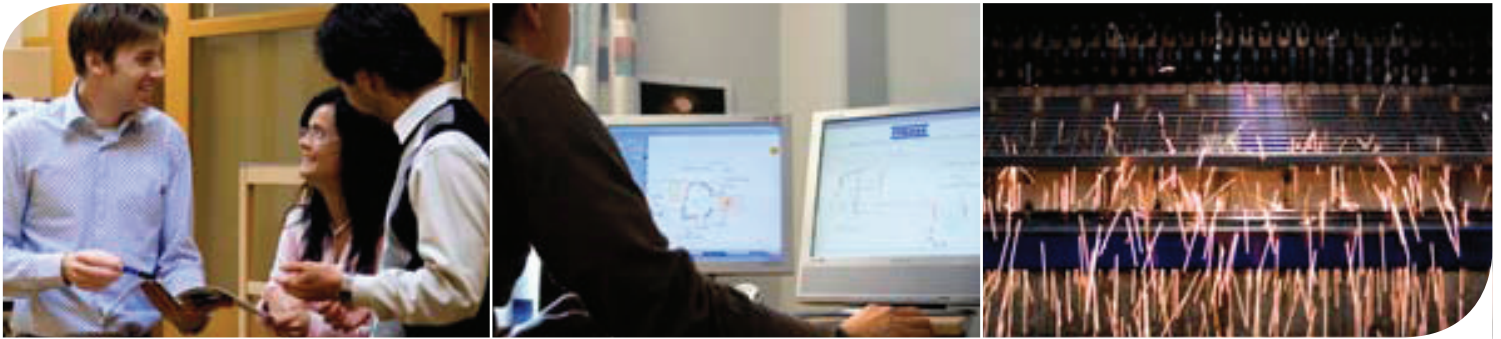
www.troax.com

✓ World leading supplier of indoor perimeter protection

Troax is the world leading supplier and producer of industrial panel and partition systems.

Our mesh and steel systems partitioning systems can be customised and supplemented to suit any application required. We fulfil your requirements through our warehouse in Swindon and our manufacturing facility in Kingswinford, either from stock or through a bespoke design.

Our tel. no. : +44 (0)1793 542000, e-mail info@troax.co.uk, you can also find your local contacts at www.troax.com



✓ Wide range of solutions

Troax delivers a wide range of high-end safety and security solutions throughout the world.

Troax can do a lot for your business security. Troax systems are divided into three market segments: the Automation and Robotics industry, Material Handling and Logistics, and Storage and Property Protection. By dividing these industries into different markets, we are able to fully focus on the technical requirements of each customer segment.



Automation and Robotics

Modern day industrial environments with advanced processes place strict demands on safety with respect to regulated access for authorised personnel. Mesh and steel panels from Troax build on a well developed modular system that can easily be tailored to suit.



Material Handling and Logistics

Safe and secure storage across all industries is a major business sector for Troax products. Among other, retailers, automotive and third-party logistic companies and defensive/government institutions all use Troax in a variety of different applications.



Storage and Property Protection

Whether it is for a new construction or if you are planning a renovation, we are certain that you will find our solutions easy to work with. Your unique requirements for space and security and our own commitment to innovation have contributed to our ongoing research and development, resulting in improved products for the customer.



SKILL, QUALITY AND EXPERIENCE



Material Handling & Logistics



Our strength within Material handling and Logistics

Troax have representation and local presence in all areas of the UK and Ireland, as well as mainland Europe. Troax are unique in that we can respond quickly to your enquiry and provide the appropriate modular solution with access to locally held stocks.



Caelum – Storage and Industrial Wall Partitioning System

The Caelum storage and industrial wall partitioning system is a very cost-effective modular mesh panel system, which can be customised to fit to your specific requirements. All our systems have a quality guarantee and are available in varying security levels. Panels are easy to assemble on-site, resulting in optimized storage areas.



Musca – Anti-Collapse System

Anti-Collapse system is the generic term for Troax pallet rack safety screens that prevent spillage and secure the working environment. Musca Anti-Collapse panels, as Caelum, are available in a variety of different mesh apertures and stand-off bracket sizes.



Troax Shelving System

Troax Shelving is an easily installed pallet rack decking solution. It fulfils all requirements with regards to fire safety and loading visibility and can withstand various loading capacities. The shelving system offers both standard and tailor-made solutions to suit your requirements.

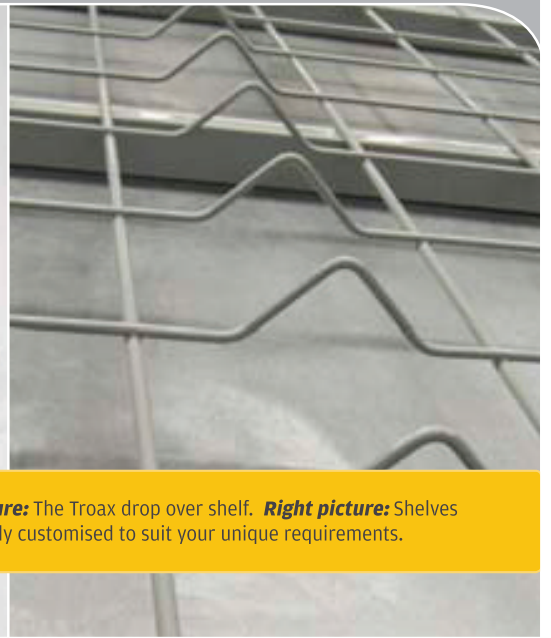
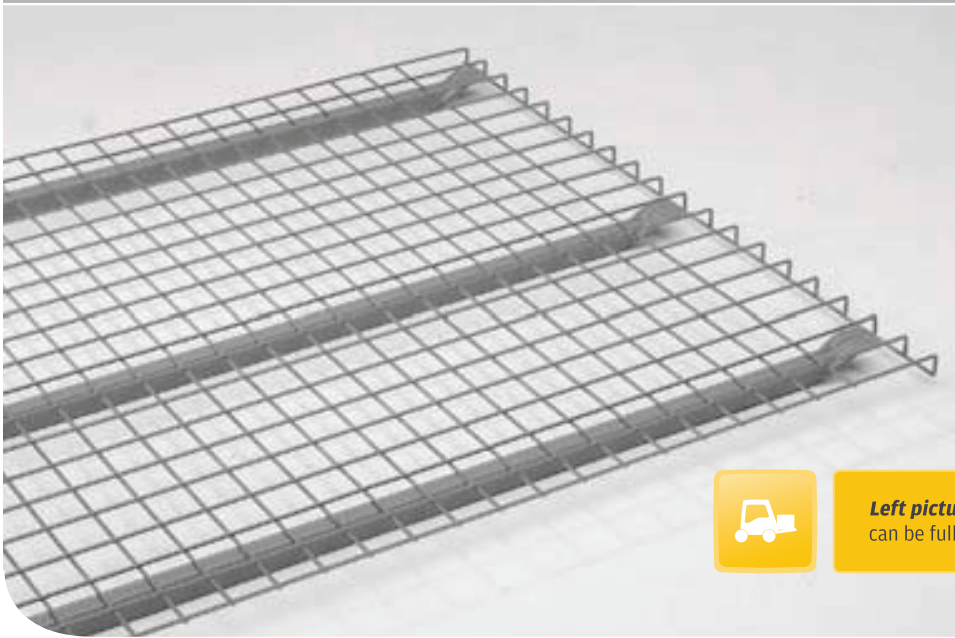


Steel Partitioning Systems

Troax single and double skin partitioning systems offer an ideal solution where solid and glazed walls are needed for offices, secure stores, factory and warehouse division, cleanrooms, fire-rated and sound reduction areas.

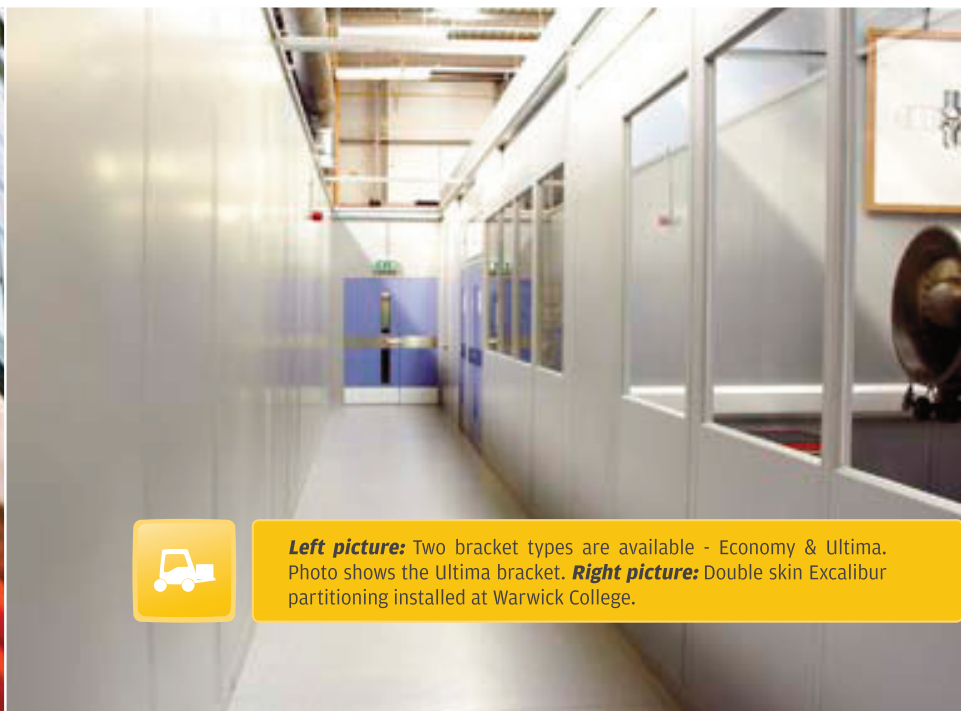


SKILL, QUALITY AND EXPERIENCE



Left picture: The Troax drop over shelf. **Right picture:** Shelves can be fully customised to suit your unique requirements.

✓ **We bring skill, quality & experience to all our solutions**



Left picture: Two bracket types are available - Economy & Ultima. Photo shows the Ultima bracket. **Right picture:** Double skin Excalibur partitioning installed at Warwick College.



Picture above: Sabre partitioning is ideal for creating assembly areas for manufacturing lines.



Middle left: Secure enclosure in server room that provides excellent vision and ventilation. **Middle right:** Toledo CR-2 partitioning is ideal for creating cleanroom assembly areas within a factory. **Picture below:** Storage area for a retail application.



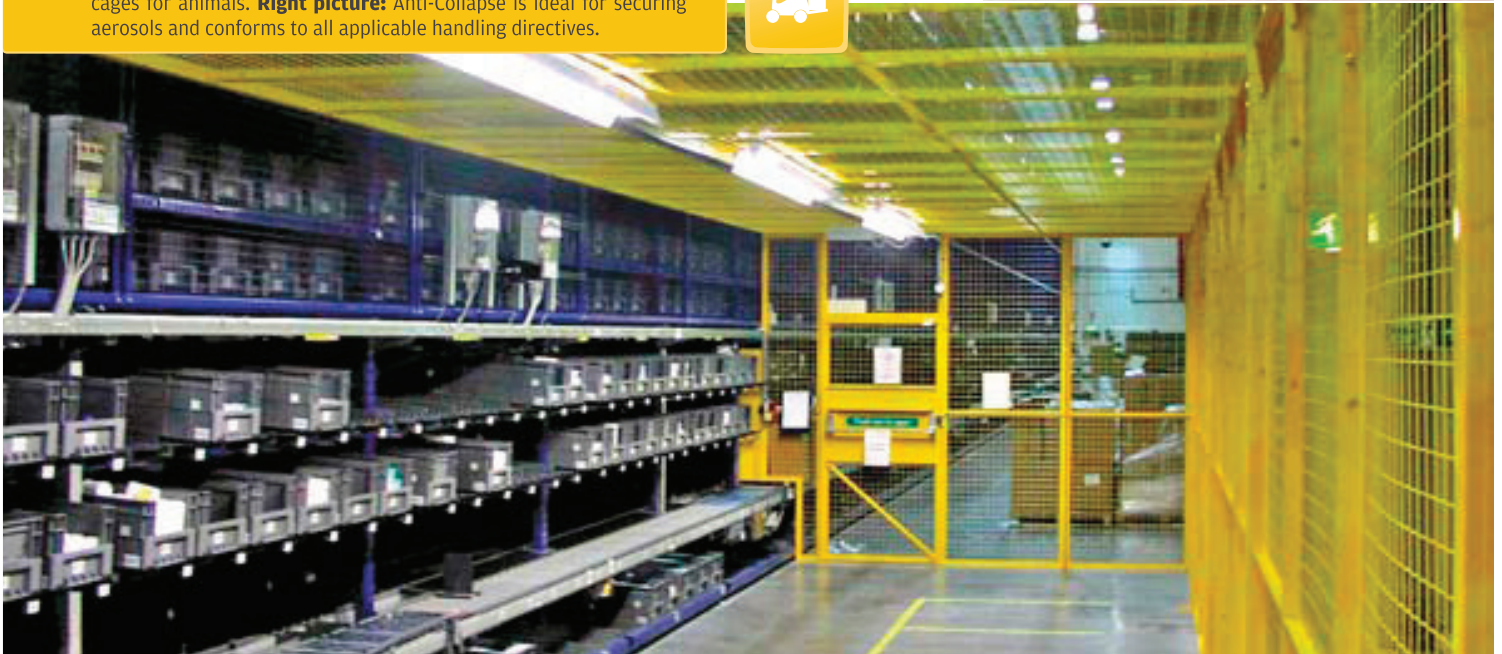
✓ Standard and tailor-made solutions to fit all applications



Picture above: A typical Toledo CR-2 application.



Picture above: Mesh panels are ideal for creating individual security cages for animals. **Right picture:** Anti-Collapse is ideal for securing aerosols and conforms to all applicable handling directives.



Picture above middle: A typical three-sided mesh enclosure with a roof is ideal for segregating and securing parts stores. **Pictures below left:** Sabre can be used to create wash-down areas for paint lines. **Pictures below right:** The Troax Boxes are ideal for outdoor applications to store gas canisters, waste receptacles, recycling, etc.





Picture top left: Single and double skin partitioning can be multi-tiered and profiled to the roof.
Picture top right: A typical shelf application in a retail warehouse. **Picture above:** A typical mesh enclosure in a warehouse that protects people from injury when pallets and conveyer belts are in motion.



SHELVES

Z-profile shelves

Shelf with 125 kg	UDL capacity
Shelf with 250 kg	UDL capacity
Shelf with 500 kg	UDL capacity
Shelf with 1000 kg	UDL capacity

Drop over shelves

Shelf with 125 kg	UDL capacity
Shelf with 250 kg	UDL capacity
Shelf with 500 kg	UDL capacity

Other capacities are available.

Please contact your local dealer for more information.

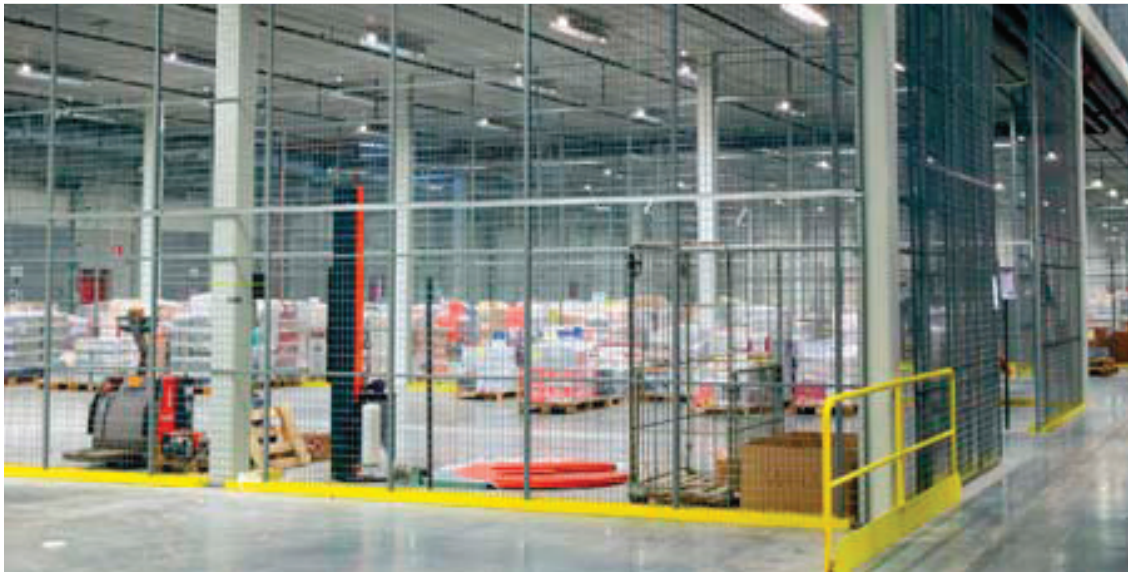
Technical Info:

UDL= Uniformly Distributed Load



Troax Shelving System

Troax mesh shelves are easy to install and can be custom designed to fit your application. They aid in fire safety and can withstand various loading capacities depending on the storage requirement. Two types of shelf panels are available: the Z-profile and Drop-over. Both types of shelf are compatible with all types of pallet racking and simply drop onto the pallet rack beams for a quick installation.



Caelum – Storage and Industrial Wall Partitioning System

Troax Caelum provides a fully adaptable storage solution that fits all your storage requirements. Standard components and a wide range of standard panel dimensions help us to provide tailor-made storage solutions of the highest quality. The benefits of mesh partitioning are widespread - mesh partitioning allows natural light to filter through and facilitates sprinkler systems to aid in fire safety.

CAELUM

Panels (HxW) mm:

Panel	2200 x 200
Panel	2200 x 300
Panel	2200 x 700
Panel	2200 x 800
Panel	2200 x 1000
Panel	2200 x 1200
Panel	2200 x 1500
Available in UR 350 & UX 450 version	

Panel UX 450 800 x 200
Panel UX 450 800 x 300
Panel UX 450 800 x 700
Panel UX 450 800 x 800
Panel UX 450 800 x 1000
Panel UX 450 800 x 1200
Panel UX 450 800 x 1500
Available in UX 450 execution

Doors

Doors available in UX 450 execution in various combinations; swing doors, sliding doors, different lock options etc. Please contact your local dealer for more information.

Technical info UX 450:

Frame:	30 x 20 x 1,25 mm
Wire:	3 x 3,75 mm
Mesh size:	50 x 50 mm & 25 x 25 mm
Finish:	Powder paint, Grey RAL 7037
Available in hot-dip galvanized finish	

Technical info UR 350:

Frame:	19 x 19 x 1 mm
Wire:	2,5 x 2,5 mm
Mesh size:	50 x 50 mm
Finish:	Powder paint, Grey RAL 7037
Available in hot-dip galvanized finish	



Musca – Anti-Collapse System

The Musca Anti-Collapse system prevents many accidents when handling palletised goods. Musca consists of fully welded mesh on a light tubular frame. It is easily fitted using stable brackets that fit most types pallet racking. The mesh sections are available in three different safety levels: UR350, UR325 and UR300. Stand-off brackets are available in two designs - Ultima and Economy.

MUSCA

Panels (HxW) mm:

Panel	2200 x 700
Panel	2200 x 1200
Panel	2200 x 1500
Panel	1100 x 700
Panel	1100 x 1200
Panel	1100 x 1500
Available in mesh size 50 x 50, 100 x 50 & 25 x 25 mm	

Ultima Bracket

Ultima 150 mm
Ultima 210 mm

Economy Bracket

Economy 50 mm, pre-galvanized
Economy 100 mm, pre-galvanized
Economy 150 mm, pre-galvanized
Economy 200 mm, pre-galvanized
Economy 250 mm, pre-galvanized
Economy 300 mm, pre-galvanized

Technical info:

Frame:	19 x 19 x 1,0 mm
Wire:	2,5 x 2,5 mm
Finish:	Powder paint, Grey RAL 7037
Available in hot-dip galvanized finish	



TOLEDO

Panels

Panels (Heights) mm: 2440, 2745, 3050
Panels (Widths) mm: 300, 500, 900, 1000

Panels are available in any combination of full steel, steel/glass/steel, or fully glazed (500mm wide). Single/double hinged doors and single/double sliding doors are available in a variety of sizes with a variety of locking options.

Finish

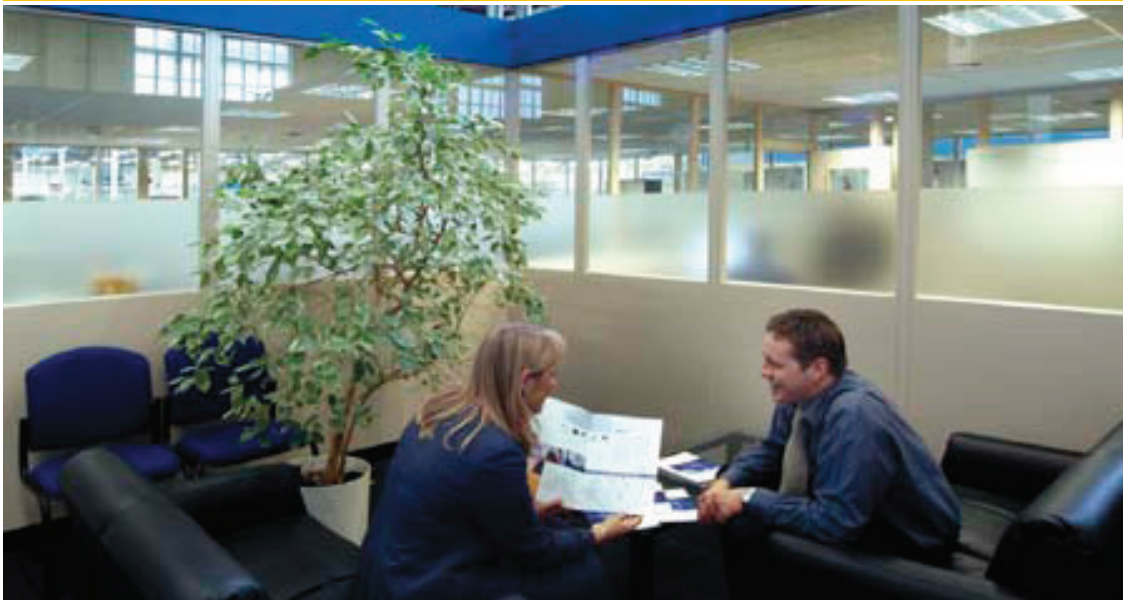
Powder coated in white RAL 9016 (other colours available on request)



Toledo CR-2 Cleanroom Partitioning System

Toledo CR-2 is a high-quality double skin cleanroom partitioning system, although its versatility allows it to be used in many applications. Used in conjunction with the correct air handling and HVAC systems, Toledo can achieve a class 5 cleanroom environment. This is achieved by reducing the number of joints and ledges, and using special flush glazing and coved skirting.

Toledo can be multi-tiered and profiled for warehouse and office divisions in specialised areas.



EXCALIBUR

Panels

Panels (Heights) mm:
2440, 2745, 3050 & 3660
Panels (Widths) mm:
300, 400, 500, 600, 700, 800, 900, 1000

Panels are available in any combination of full steel, steel/glass/steel, steel/glass, fully glazed or chair rail glazed. Single/double hinged doors and single/double sliding doors are available in a variety of sizes with a variety of locking options.

Finish

Powder coated in Sandstone BS.08.B.17, Grey BS.0.A.05, Grey RAL 7037 or White RAL 9010 (other colours available on request)



Excalibur Double Skin Partitioning System

Excalibur is a quality demountable double skin office or factory partition that offers an attractive appearance for the working environment. Panels can be supplied in half-hour or hourly fire-rated versions. Noise reduction capabilities are also available. Excalibur is offered with a full range of proprietary suspended ceilings with tiles that cover the full spectrum of textures and styles.

Heavy duty top capping is used when panels need to be multi-tiered.



SABRE

Panels

Panels (Heights) mm:
2440, 2745, 3050 & 3660

Panels (Widths) mm:
300, 400, 500, 600, 700, 800, 900,
1000, 1200

Powder coated in Sandstone BS.08.B.17,
Grey BS.0.A.05, Grey RAL 7037 or White
RAL 9010 (other colours available on
request)



Sabre Single Skin Partitioning System

Sabre is a modular, demountable panel system that can be used for a variety of applications within a factory or warehouse environment. It is ideal for enclosing working areas where appearance is important but without the extra cost of a double skin system. Sabre is widely used for enclosing paint lines and coating furnaces and is available in a modified form to enable access for maintenance.

Sabre panels can be multi-tiered and profiled to accommodate an existing structure.



BROADSWORD

Panels

Panels (Heights) mm:
2440, 2745, 3000 & 3660

Panels (Widths) mm:
300, 400, 500, 600, 700, 800, 900,
1000, 1200

Panels are available in any combination of full steel, steel/mesh/steel, steel/mesh, full mesh, steel/glass/steel and steel/glass. Single/double hinged doors and single/double sliding doors are available in a variety of sizes with a variety of locking options. Mesh includes expanded steel sheet.

Finish

Powder coated in Sandstone BS.08.B.17,
Grey BS.0.A.05, Grey RAL 7037 or White
RAL 9010 (other colours available on
request)



Broadsword Single Skin Partitioning System

Broadsword is an economic heavy duty single skin system with superb strength and adaptability. Its robust angle frame makes it the ideal choice for creating a highly secure perimeter around any area. In typical applications, Broadsword prevents enclosed areas from intrusion, keeping contents safe.

Broadsword panels can be multi-tiered.



SKILL, QUALITY AND EXPERIENCE



Troax UK Ltd Enterprise House, Murdock Road, Dorcan, Swindon, Wiltshire, SN3 5HY
Tel: +44 1793 542 000 Fax: +44 1793 618 784 E-mail: info@troax.co.uk www.troax.com

Member of the Gunnebo security group